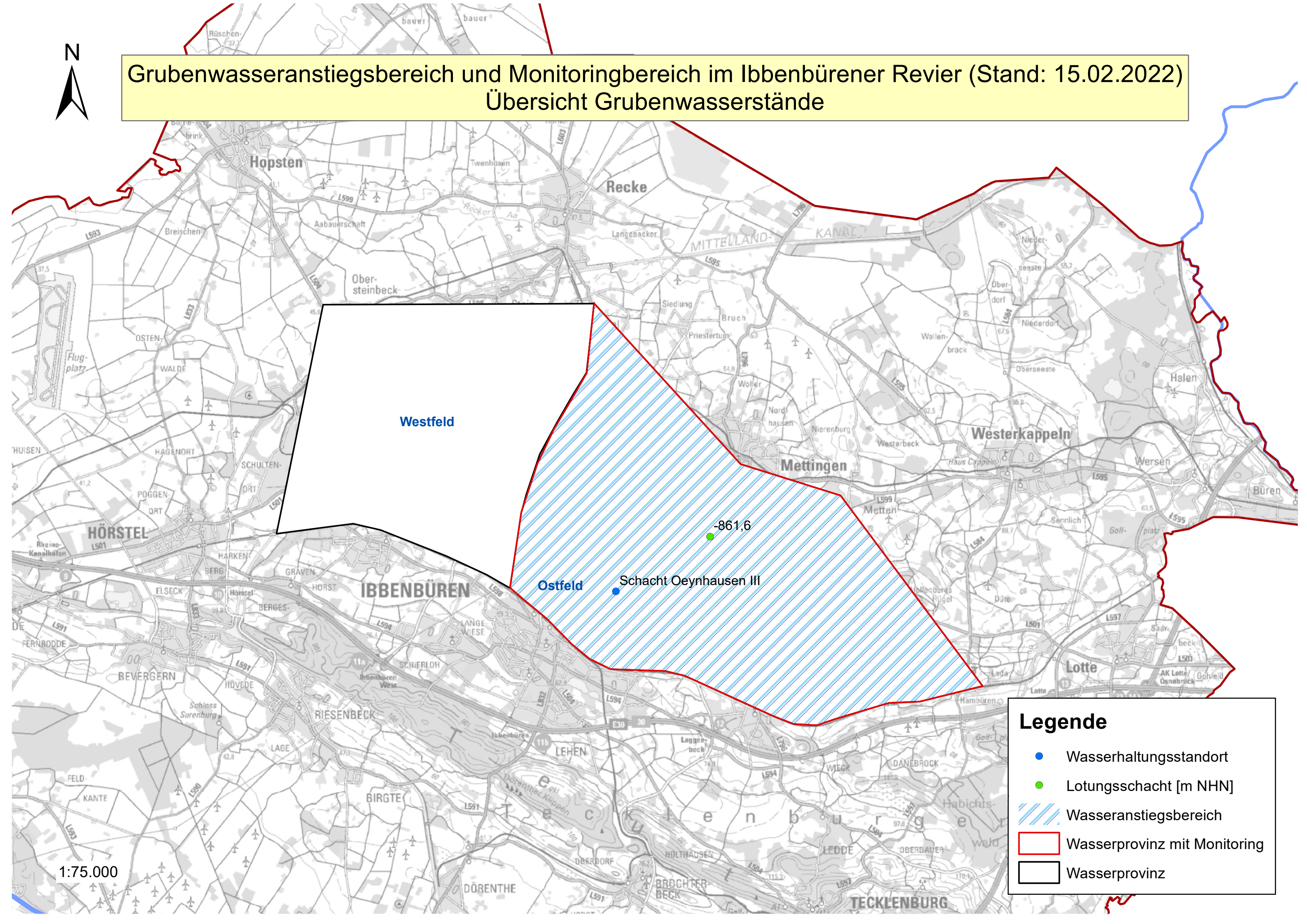









# Grubenwasseranstiegsbereich und Monitoringbereich im Ibbenbürener Revier (Stand: 15.02.2022)

## Übersicht Grubenwasserstände



### Legende

-  Wasserhaltungsstandort
-  Lotungsschacht [m NHN]
-  Wasseranstiegsbereich
-  Wasserprovinz mit Monitoring
-  Wasserprovinz

1:75.000